

ADDENDUM NO. 5

**San Rafael City Schools
Terra Linda High School
Innovation Hub**

Date: 13 December 2018

Owner: San Rafael City Schools
310 Nova Albion Way
San Rafael, CA 94903

Project: Terra Linda High School
Innovations Hub
320 Nova Albion Way
San Rafael, CA 94903

Architect: Harley Ellis Devereaux
417 Montgomery Street, Suite 400
San Francisco, CA 94104

By: Michael J. Myers, AIA

This Addendum has been prepared to clarify, modify, delete, or add to the drawings and/or specifications for the above referenced project, and revisions to items listed here shall supersede description thereof prior to the above stated date. All conditions not specifically referenced here shall remain the same. It is the obligation of the Prime Contractor to make subcontractors aware of any items herein that may affect submitted bids.

Acknowledge receipt of this addendum by inserting its number and date in the Bid Form. Failure to do so may subject bidder to disqualification.

All addenda items refer to the drawings and specifications unless specifically noted otherwise.

TOTAL PAGES IN THIS ADDENDUM (excluding attachments): 1

PART D – CHANGES TO DRAWINGS

- AD-5.D01 Drawing E2.1 – Power Plan: Replace E2.1 with attached E2.1.
- AD-5.D02 Drawing E3.1 – Signal Plan: Replace E3.1 with attached E3.1.
- AD-5.D03 Drawing E5.1 – Schedules and Detail: Replace E5.1 with attached E5.1.

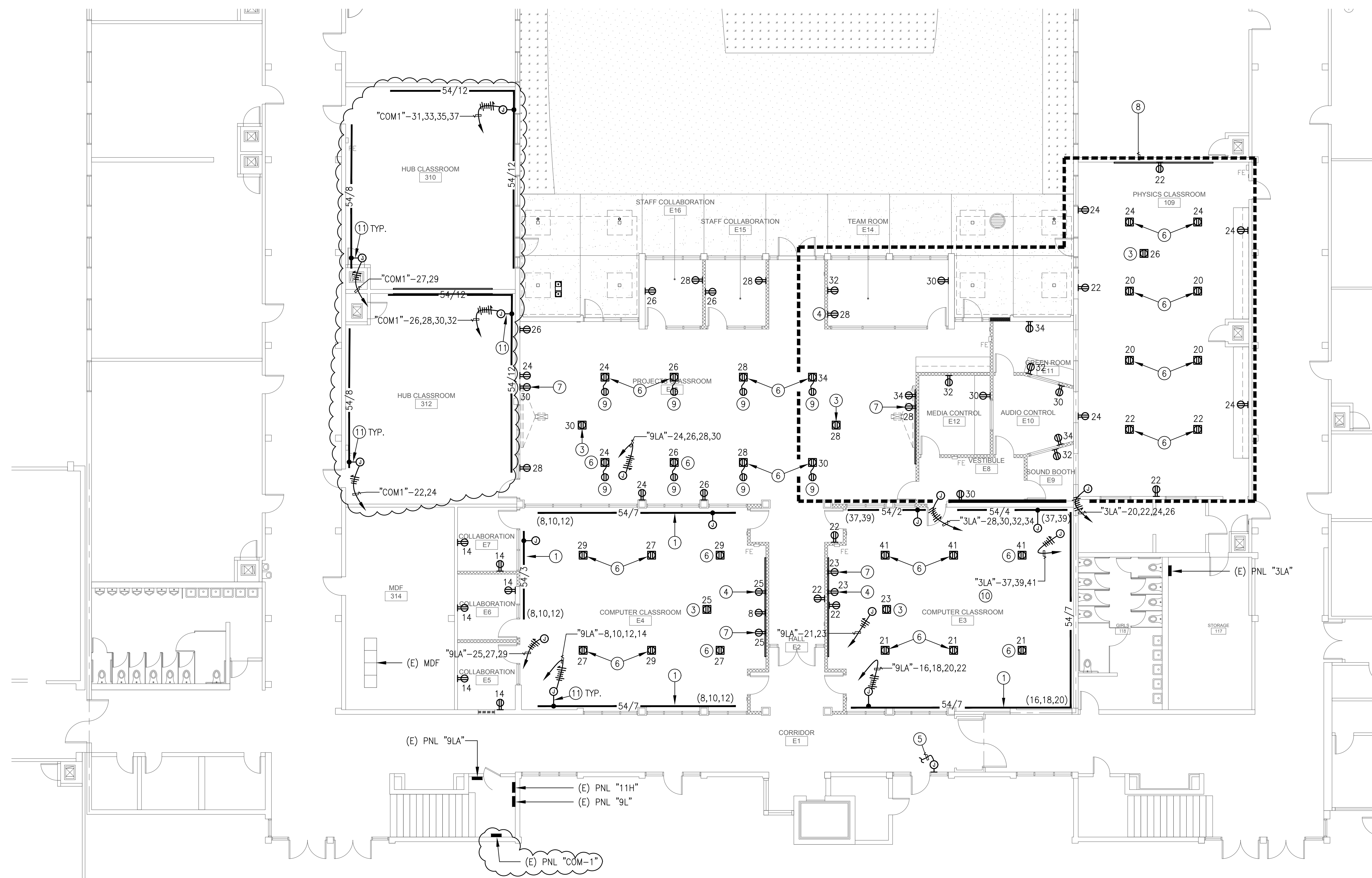
ATTACHMENTS

- E2.1 – Power Plan
- E3.1 – Signal Plan
- E5.1 – Schedules and Detail

END OF ADDENDUM

SHEET NOTES:

- 1 PROVIDE STANCHION SUPPORT AND MOUNT SURFACE RACEWAY @±18" A.F.F.
- 2 COORDINATE WITH THE ARCHITECT FOR EXACT MOUNTING HEIGHT.
- 3 POWER FOR CEILING MOUNT PROJECTOR.
- 4 POWER FOR MONITOR.
- 5 POWER FOR DOOR OPERATION.
- 6 CEILING MOUNTED OUTLET. PROVIDE EYEBOLT ADJACENT FOR CORD REEL, PROVIDE ANCHOR POINT FOR FUTURE POWER POLE AT DROP CEILINGS.
- 7 POWER FOR PROJECTION SCREEN.
- 8 ALL CIRCUITS IN THIS AREA TO BE CONNECTED FROM (E) PANEL "3LA"
- 9 PROVIDE A RETRACTABLE POWER CORD REEL, HUBBELL CAT #HBLC40123TT, 15A, 125V.
- 10 PROVIDE (N) 20A/1P, 120V CIRCUIT BREAKERS IN (E) SPACES (TOTAL OF 3). (N) CIRCUIT BREAKER TYPE AND INTERRUPTING RATING SHALL MATCH (E).
- 11 VERTICAL SURFACE RACEWAY WMS400 WITHOUT DEVICES STUB-UP +6" ABOVE CEILING.



1 POWER PLAN
 E2.1 SCALE: 1/8" = 1'-0"

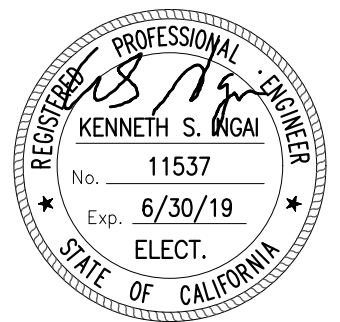


**Terra Linda HS
 Innovation Hub**

320 Nova Albion Way
 San Rafael, CA
 94903 (415) 492-3105

Date	Issued For
06/08/2018	DSA Summital
11/14/2018	DSA Back check

Alliance Engineering Consultants, Inc.
 221 Pinedale Drive, Ste. 10 San Rafael, CA 94903
 Phone: (415) 492-3105 Fax: (415) 492-3105
 PROJECT NO: 101-18-03 www.aec-engineers.com



FILE#: 21-H1 PTN#: 65466-28
 IDENTIFICATION STAMP
 DIV. OF THE STATE ARCHITECT
APP#: 01-117586
 AC ___ FLS ___ SS ___
 DATE _____

HED
 417 Montgomery Street
 Suite 400
 San Francisco, CA
 94104 USA
 (415) 981-2345
 WWW.HED.DESIGN

© 2018
 2017-03489-000

POWER PLAN

ADDENDUM 5
E2.1

A/V EQUIPMENT LIST (OR EQUAL)

ROOM E3 COMPUTER CLASSROOM:

- 80" 16-7 monitor (OFCI)
 - Monitor Mount (CFCI)
 - Projector/Ceiling (OFCI)
 - Ceiling-mount for projector (CFCI)
 - Electric projection screen (CFCI)
 - Sound system for monitor (OFCI)
 - Sound System for projector (OFCI)
 - Display Inputs/Wall (CFCI)
 - Cable install/Kits (CFCI)
- SHARP PN-LE801
CHIEF XTM1U
EPSON POWERLITE 990
CHIEF KITES003
DA-LITE 70068 TENSIONED ADVANTAGE DELUX
POLK MagniFI MAXAM 8214
DUKANE Sound Collar
Dual EXTRON WPB109
EXTRON

ROOM E4 COMPUTER CLASSROOM:

- 80" 16-7 monitor (OFCI)
 - Monitor Mount (CFCI)
 - Projector/Ceiling (OFCI)
 - Ceiling-mount for projector (CFCI)
 - Electric projection screen (CFCI)
 - Sound system for monitor (OFCI)
 - Sound System for projector (OFCI)
 - Display Inputs/Wall (CFCI)
 - Cable install/Kits (CFCI)
- SHARP PN-LE801
CHIEF XTM1U
EPSON POWERLITE 990
CHIEF KITES003
DA-LITE 70068 TENSIONED ADVANTAGE DELUX
POLK MagniFI MAXAM 8214
DUKANE Sound Collar
Dual EXTRON WPB109
EXTRON

ROOM E13 PROJECTS CLASSROOM:

- Two ceiling-mount projectors (OFCI)
 - Ceiling Mounts/Projectors (CFCI)
 - Two electric projection screens (CFCI)
 - Sound system for each projector (OFCI)
 - Display Inputs/Wall (CFCI)
 - Cable Install Kits (CFCI)
- EPSON POWERLITE 990
CHIEF KITES003
DA-LITE 70068 TENSIONED ADVANTAGE DELUX
DUKANE Sound Collar
EXTRON WPB109
EXTRON

ROOM E14 TEAM ROOM:

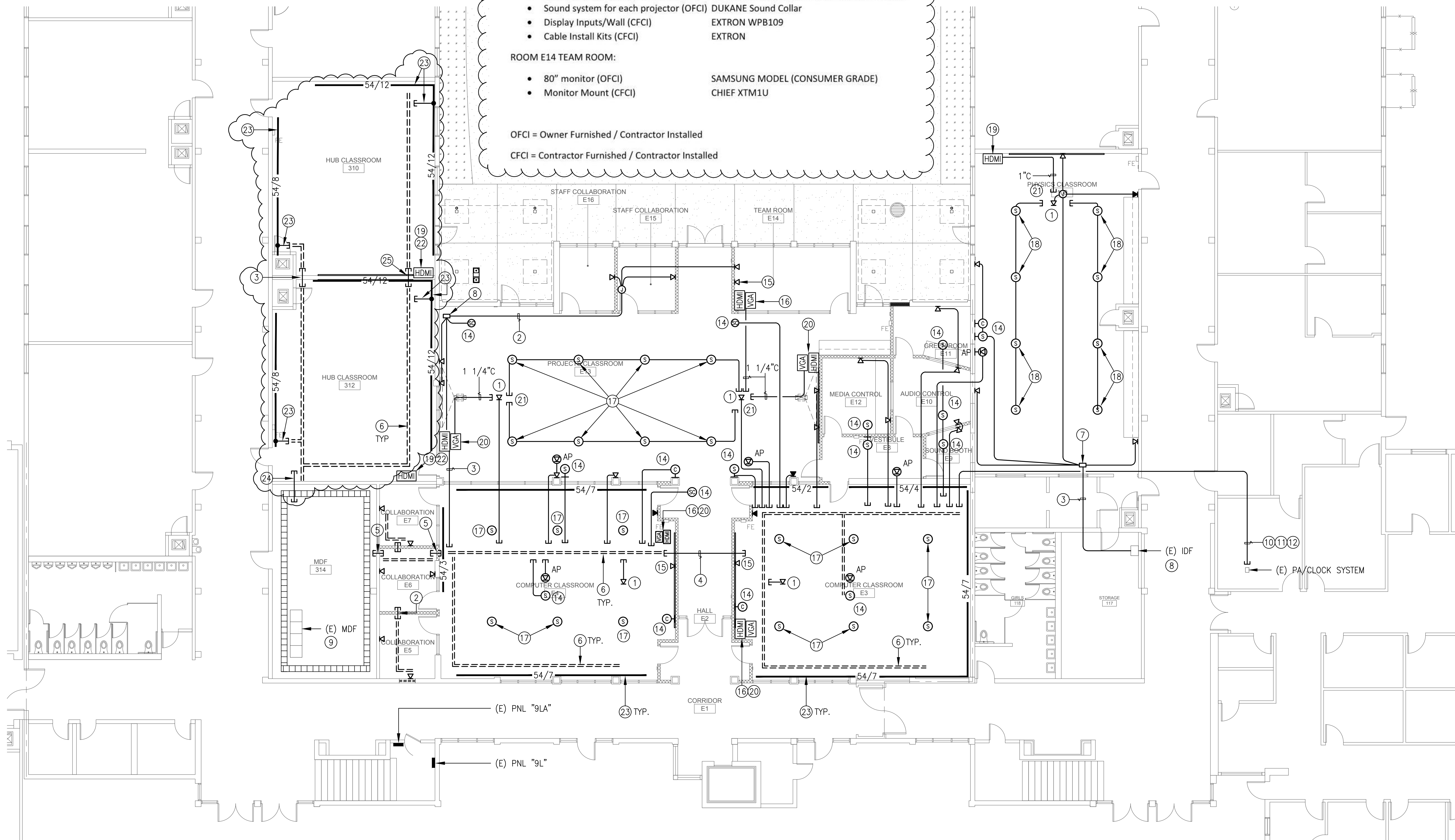
- 80" monitor (OFCI)
 - Monitor Mount (CFCI)
- SAMSUNG MODEL (CONSUMER GRADE)
CHIEF XTM1U

OFCI = Owner Furnished / Contractor Installed

CFCI = Contractor Furnished / Contractor Installed

SHEET NOTES:

- DATA OUTLET FOR CEILING MOUNT PROJECTOR. COORDINATE WITH ARCHITECT FOR EXACT LOCATION.
- 1 1/4" (LOW VOLTAGE)
- 1 1/2" (LOW VOLTAGE)
- (3) 2" (LOW VOLTAGE)
- (5) 2"
- PROVIDE CABLE SUPPORT ALONG DOUBLE LINES. CABLE SHALL BE SNAKE TRAY CAT #CM201-6-8 COMPLETE WITH SUPPORT AT 5FT. INTERVAL MAX.
- PROVIDE 10"x8"x6" NEMA 1 PULLBOX AND SECURE ON THE WALL.
- CONNECT (N) DATA CABLES IN (E) IDF PATCH PANEL. PROVIDE ALL NECESSARY CAT 6 PATCH CORD AS REQUIRED AND ALL OTHER DATA COMPONENTS FOR A COMPLETE INSTALLATION.
- CONNECT (N) DATA CABLES IN (E) PATCH PANEL SPARE PORTS. PROVIDE ADDITIONAL CAT 6 PATCH PANEL (MODULAR), CAT 6/CAT6A PATCH CORD AS REQUIRED FOR A COMPLETE INSTALLATION.
- 1 1/4" (CLOCK/SPEAKER)
- RUN CONDUIT ABOVE CEILING AND PROVIDE CONDUIT SUPPORT AT 8FT. INTERVAL MAXIMUM.
- IF (E) PATHWAY FOR CLOCK/PA CAN BE RE-USED, THEN NOTE (1) IS NOT REQUIRED.
- FIELD VERIFY AND UTILIZE (E) CABLE LADDER TO RUN (N) CABLES.
- RELOCATED ELECTRICAL ITEM AS NOTED BY BY NOTE 3 ON SHEET E2.0
- DATA OUTLET FOR MONITOR.
- (1) HDMI & (1) VGA INPUT FOR MONITOR.
- CEILING SPEAKER CONNECTED TO PROJECTOR/MONITOR.
- CEILING SPEAKER CONNECTED TO PROJECTOR.
- ADD (1) HDMI OUTLET AND CONNECT TO (E) PROJECTOR.
- (1) HDMI & (1) VGA INPUT FOR PROJECTOR.
- COORDINATE WITH PROJECTOR CONTRACTOR PRIOR TO ROUGH-IN.
- PROVIDE 1" FROM HDMI TO (E) PROJECTOR. FIELD VERIFY FOR (E) LOCATION.
- SURFACE RACEWAY AS SHOWN ON DWG. E2.1.
- (4) 2" (LOW VOLTAGE)
- (2) 2" (LOW VOLTAGE)



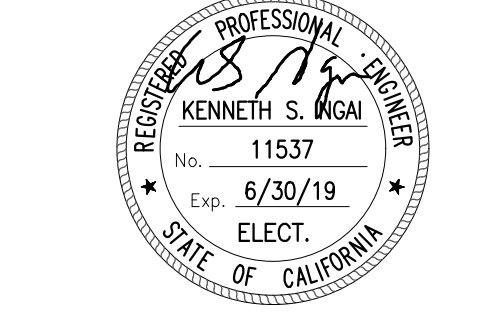
1 SIGNAL PLAN
E3.1 SCALE: 1/8" = 1'-0"



Terra Linda HS
Innovation Hub

320 Nova Albion Way
San Rafael, CA
94903 (415) 492-3105

Date	Issued For
06/08/2018	DSA Summit
11/14/2018	DSA Back check



FILE#: 21-H1 PTF#: 65466-28

IDENTIFICATION STAMP
DIV. OF THE STATE ARCHITECT
APP#: 01-117586
AC ___ FLS ___ SS ___
DATE

HED
417 Montgomery Street
Suite 400
San Francisco, CA
94104 USA
(415) 981-2345
WWW.HED.DESIGN

© 2018
2017-03489-000

SIGNAL PLAN
ADDENDUM 5
E3.1

